

ehd

COMPONENTS 2005

(PTY) LTD

t/a ENGINE & HEAVY DUTY COMPONENTS

HEAD OFFICE JOHANNESBURG

Tel: +27 (0)11 870 5000
Fax to Mail: 086 676 6628
Cnr Hubert & Marshall Streets,
Marshalltown, Johannesburg 2001
PO Box 6541 Johannesburg, 2000,
South Africa
ehd@ehd.co.za

BLOEMFONTEIN

Tel: +27 (0)51 430 5404
17 Krause Street, Oranjesig
PO Box 12471,
Brandhof, 9324
South Africa
ehdbloem@ehd.co.za

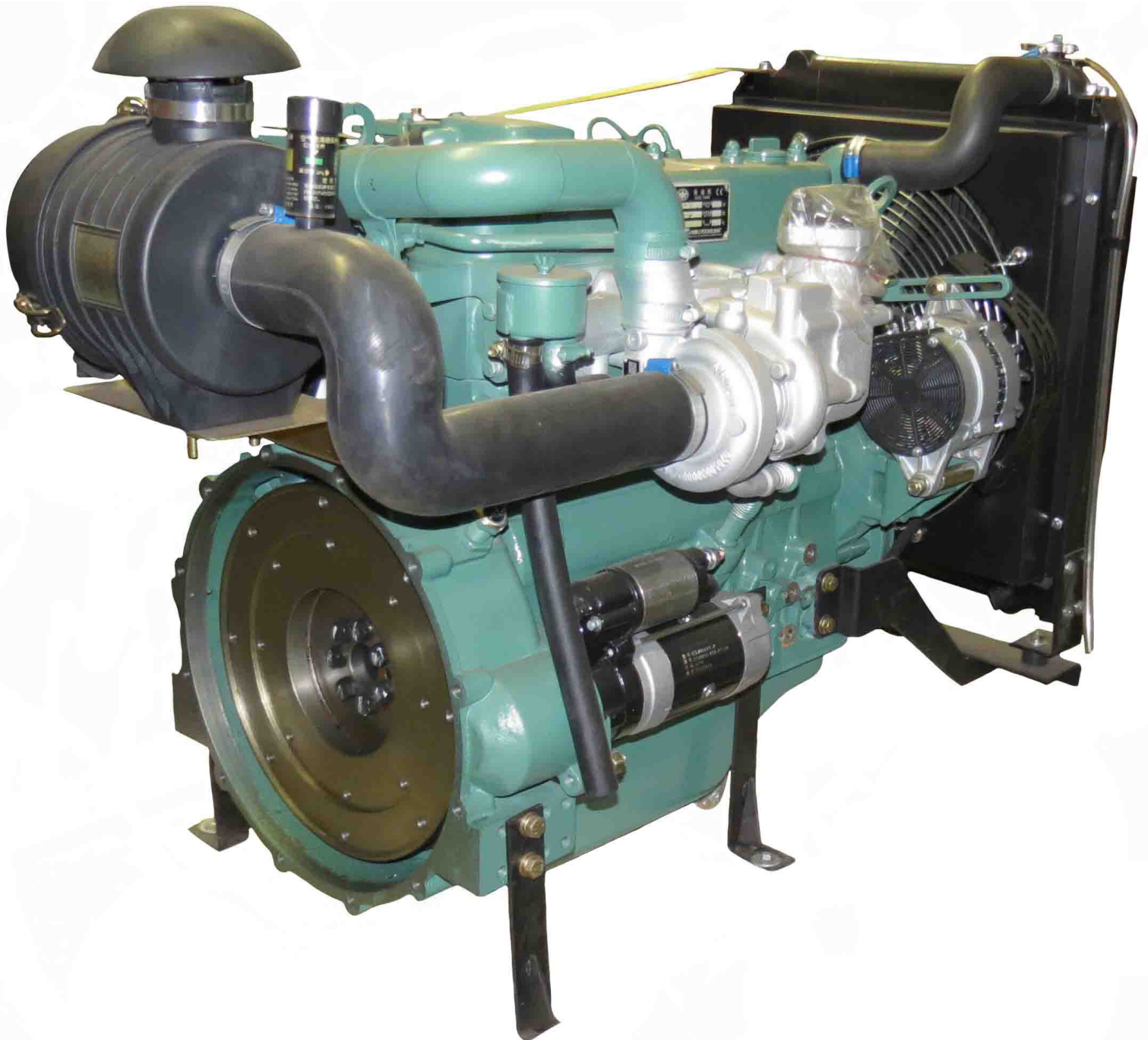
CAPE TOWN

Tel: +27 (0)21 510 0567
25 Bellray Business Park
Ampere Street, Stikland Industrial
Cape Town, 7530
PO Box 1037, Milnerton, 7435
South Africa
ehdcapestown@ehd.co.za

DURBAN

Tel: +27 (0)31 700 1160
Unit 3, Hillmax
31 Hillclimb Rd, Westmead 3610
PO Box 1054 Nagina 3604,
South Africa
ehd.dbn@ehd.co.za

4DW92-35D



4DW92-35D

Type	in line 4-cylinder 4-stroke
Air intake type	Turbocharged
Cooling mode	Water cooling
Governor mode	Mechanical or electronic
Bore x Stroke (mm)	90x100
Compression ratio	17.1
Rated speed (rpm)	1500
Displacement (L)	2.54
Prime power(without fan) (kW)	26
Standby power(without fan) (kW)	29
Fuel consumption (L/h)	7.11
Oil consumption (L/h)	0.04
Steady state speed regulation (%)	≤5
Oil capacity including filter (L)	8
Emission	Stage II
The flywheel shell interface	SAE4 Flywheel for 7.5" & 10" flexible coupling
Dry weight of base (kg)	240
Dry weight of Gen Pac (kg)	260
Overall dimension(base) (mm)	750x600x735
Overall dimension(G.P) (mm)	1120x810x760
Fan consumption (kW)	1.8
27°C air consumption (m ³ / min)	2.1
Heat rejection of exhaust (kW)	20.6
Exhaust gas temperature after turbine (°C)	450
Exhaust gas flow (m ³ /min)	5.9
Heat rejection from engine (kW)	1.6
Heat rejection of coolant (kW)	16.9
Base configuration	Standard configuration (add on the base)
Engine with fan	Intake and exhaust system: Air filter and connecting pipes
Alternator 500W 14V	Connecting flang of exhaust pipe
Starter motor 3.5kW 12V	Cooling system: Radiator with connecting pipes; Fan guard; Belt guard

Proud Member of:

