

**COMPONENTS 2005****(PTY) LTD****t/a ENGINE & HEAVY DUTY COMPONENTS****HEAD OFFICE JOHANNESBURG**

Tel: +27 (0)11 870 5000  
 Fax to Mail: 086 676 6628  
 Cnr Hubert & Marshall Streets,  
 Marshalltown, Johannesburg 2001  
 PO Box 6541 Johannesburg, 2000,  
 South Africa  
 ehd@ehd.co.za

**BLOEMFONTEIN**

Tel: +27 (0)51 430 5404  
 17 Krause Street, Oranjesig  
 South Africa  
 ehdbloem@ehd.co.za

**CAPE TOWN**

Tel: +27 (0)21 510 0567  
 25 Bellray Business Park  
 Ampere Street, Stikland Industrial  
 Cape Town, 7530  
 PO Box 1037, Milnerton, 7435  
 South Africa  
 ehdcapetown@ehd.co.za

**DURBAN**

Tel: +27 (0)31 700 1160  
 Unit 3, Hillmax  
 31 Hillclimb Rd, Westmead 3610  
 PO Box 1054 Nagina 3604,  
 South Africa  
 ehd.dbn@ehd.co.za

**YSD490D and Y490D**

Model	YSD490D	Y490D
Type	Vertical, water cooling, four stroke	
Combustion chamber type	Direct injector	
Number of cylinders	4	4
Bore(mm)	90	90
Stroke(mm)	100	105
Compression ration	18	18
Total displacement (L)	2.54	2.67
Firing order	1-3-4-2	1-3-4-2
Rated power(kw)	21/1500 25/1800	24/1500 28/1800
Min Specific Fuel Consumption at Full Load (g/kW.h)	<246	<243
Intake type	Natural Aspiration	
Cooling method	Forced watercooling	
Starting method	Electric	
Flywheel size	SAE 7.5	
Bell housing size	SAE4	
Net mass	230	240
Overall dimensions(LxWxH)(mm)	716x530x670	716x530x670

**Proud Member of:**



**COMPONENTS 2005**

**(PTY) LTD**

**t/a ENGINE & HEAVY DUTY COMPONENTS**

**HEAD OFFICE JOHANNESBURG**

Tel: +27 (0)11 870 5000  
 Fax to Mail: 086 676 6628  
 Cnr Hubert & Marshall Streets,  
 Marshalltown, Johannesburg 2001  
 PO Box 6541 Johannesburg, 2000,  
 South Africa  
 ehd@ehd.co.za

**BLOEMFONTEIN**

Tel: +27 (0)51 430 5404  
 17 Krause Street, Oranjesig  
 South Africa  
 ehdbloem@ehd.co.za

**CAPE TOWN**

Tel: +27 (0)21 510 0567  
 25 Bellray Business Park  
 Ampere Street, Stikland Industrial  
 Cape Town, 7530  
 PO Box 1037, Milnerton, 7435  
 South Africa  
 ehdcapetown@ehd.co.za

**DURBAN**

Tel: +27 (0)31 700 1160  
 Unit 3, Hillmax  
 31 Hillclimb Rd, Westmead 3610  
 PO Box 1054 Nagina 3604,  
 South Africa  
 ehd.dbn@ehd.co.za

Designation		YSD490D	Y490D
Fuel Injection Pump	Type	BQ Pump	
	Governor	All-speed, Mechanical Centrifugal	
	Fuel Delivery Pump	Single-Acting Piston Type	
Fuel Injector	Model	S Series	
	Diameter of Nozzle (mm)	0.255	
	Injection Pressure (Mpa)	19.6+1	
Lube Pump	Model	Rotor Type	
	Speed (r/min)	1500	
	Capacity (L/min)	37.5	
	Pressure (kpa)	400	
Water Pump	Model	Centrifugal, Volute, Single-Suction	
	Speed (r/min)	4000	
	Capacity (L/min)	270	
	Type	Silicon Rectifying Shunt Dynamo	
Starting Motor	Model	QDJ1329D	
	Voltage (V)	12	
	Power (KW)	3.5	
	Model	JFWZ13	JFW24X
	Voltage (V)	14	28
	Power (W)	350	500
Fuel Filter	Type	Single Stage, Paper Element	
	Model	CXZ0708A	
Lube Oil Filter	Type	Single Stage, Paper Element	
	Model	JX0810	JX0810K

**Proud Member of:**





# COMPONENTS 2005

(PTY) LTD

## t/a ENGINE & HEAVY DUTY COMPONENTS

### HEAD OFFICE JOHANNESBURG

Tel: +27 (0)11 870 5000  
Fax to Mail: 086 676 6628  
Cnr Hubert & Marshall Streets,  
Marshalltown, Johannesburg 2001  
PO Box 6541 Johannesburg, 2000,  
South Africa  
ehd@ehd.co.za

### BLOEMFONTEIN

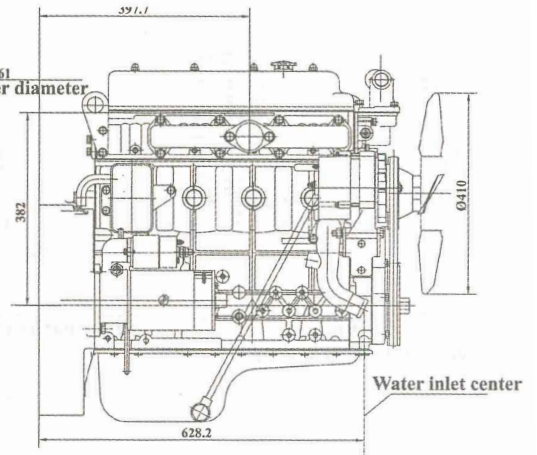
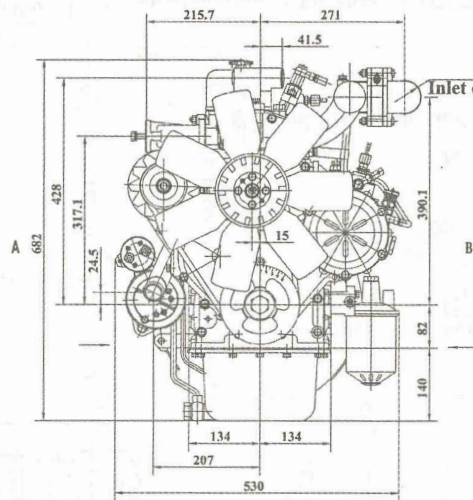
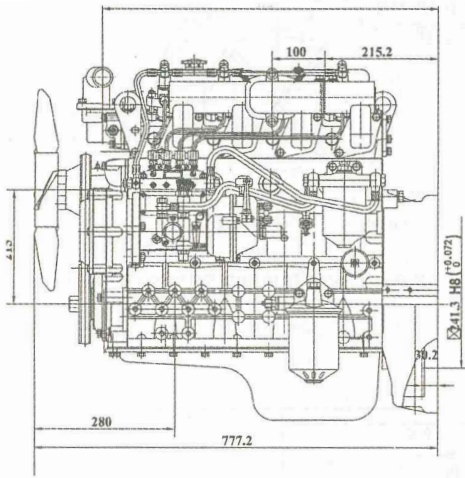
Tel: +27 (0)51 430 5404  
17 Krause Street, Oranjesig  
South Africa  
ehdbloem@ehd.co.za

### CAPE TOWN

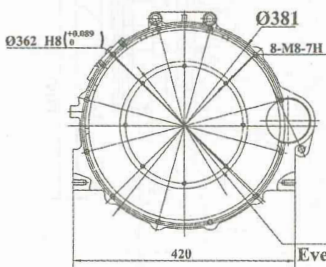
Tel: +27 (0)21 510 0567  
25 Bellray Business Park  
Ampere Street, Stikland Industrial  
Cape Town, 7530  
PO Box 1037, Milnerton, 7435  
South Africa  
ehdcape@ehd.co.za

### DURBAN

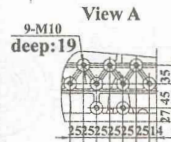
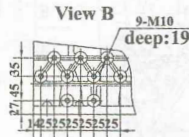
Tel: +27 (0)31 700 1160  
Unit 3, Hillmax  
31 Hillclimb Rd, Westmead 3610  
PO Box 1054 Nagina 3604,  
South Africa  
ehd.dbn@ehd.co.za



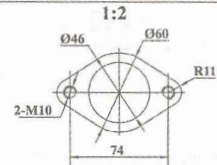
Connecting dimensions of flywheel and its housing



Flywheelhousing/Flywheel:SAE4/7.5

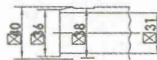


Dimensions of exhaust outlet



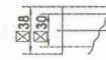
Dimensions of water inlet

1:2



Dimensions of water outlet

1:2



Proud Member of:

