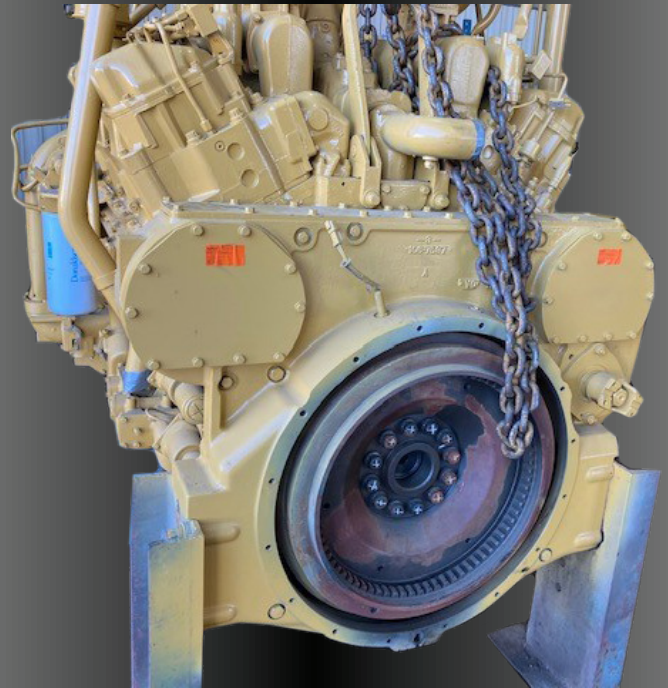
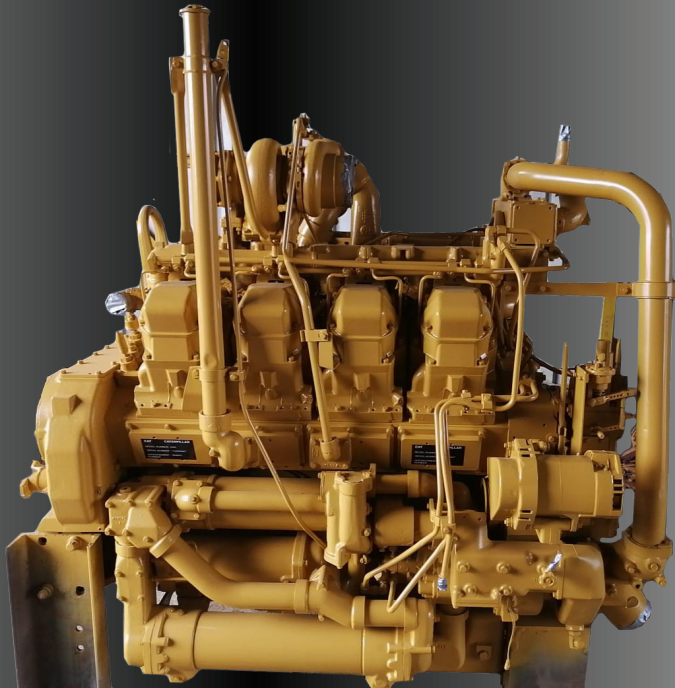


# CAT 3508 (Good Runner)

*Model 777 truck*



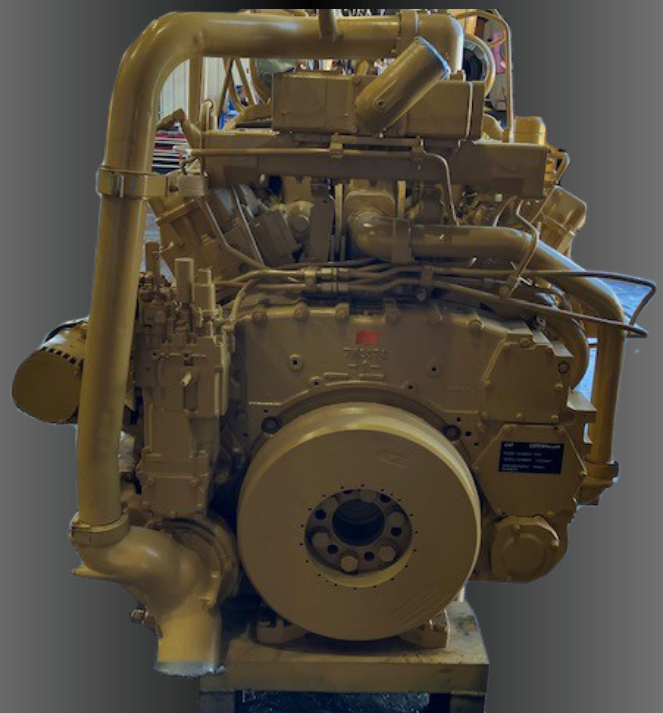
**746 kW at 1800Rpm**  
**4206 Nm at 1400Rpm**

If interested please feel  
free to contact:

Franco van Deventer: 082 228 8382

Martin Mey: 011 870 5024

sales@ehd.co.za



**For Only**

**R750 000** Excl VAT

**All Prices exclude VAT. While Stocks Last**

**For more specials and information visit our website: [www.ehd.co.za](http://www.ehd.co.za)**

Prices valid from 1 September 2023 to 30 September 2023. Prices excl VAT. Errors and Omissions excepted. All prices are Ex-Warehouse Johannesburg. Valid while stocks last and exclude delivery/freight and insurance costs. We reserve the right to limit quantities. Manufacturer's names, numbers, symbols, photos and descriptions are used for reference purposes only and it is not implied that the parts referred to are the products of those manufacturers. It is specifically recorded that all generator sets, engines or equipment output ratings, per specifications, were measured at sea level and the performance of the generator, engine or equipment may vary according to the altitude at which it is operated

**Proud Member of:**



DYNAMOMETER TEST REPORT

Customer: 8761  
Job No.: JOHAN  
Tested by.: 1120  
Dyno No.:

Test Date: 2021/11/20  
Engine No.: CAT 3508  
Engine Model: 746 KW AT 1800 RPM  
Specs Power: 4206 Nm AT 1400 RPM  
Torque:

Remarks:

Time	Speed rpm	TrqEng Nm	PwrEng kW	TrqCor Nm	PwrCor kW	PwrCor hp	Oil Bar	Fuel L Bar	Fuel R Bar	Boost L Bar	Boost R Bar	CoolOut degC	Coolin degC	WaterOu degC	WaterIn degC	Exh. L degC	Exh. R degC	Oil degC
01:51:10	700	52	4	57	4	6	3.1	2.2	0.0	0.04	-0.00	18	26	65	28	209	218	61
01:52:06	1948	233	48	255	52	69	4.6	4.5	0.0	0.07	0.09	20	26	65	28	250	264	61
01:52:33	1881	1793	235	1307	257	342	4.5	4.3	0.0	0.22	0.31	19	26	64	28	330	356	61
01:52:43	1849	1712	332	1874	363	483	4.5	4.3	0.0	0.38	0.47	22	26	64	29	371	396	62
01:52:59	1797	2698	508	2952	739	739	4.5	4.1	0.0	0.90	0.88	21	26	65	29	427	452	62
01:53:13	1740	3684	671	4031	734	977	4.5	4.0	0.0	1.30	1.29	22	26	67	29	466	490	63
01:53:18	1671	3970	695	4344	760	1011	4.4	3.9	0.0	1.38	1.35	23	26	68	29	481	505	64
01:53:26	1524	4232	675	4630	739	983	4.3	3.8	0.0	1.41	1.32	20	26	69	29	499	525	64
01:53:28	1487	4304	670	4709	733	975	4.3	3.7	0.0	1.38	1.32	20	26	69	29	503	528	64
01:53:34	1405	4307	634	4712	693	922	4.3	3.6	0.0	1.32	1.26	22	26	70	29	516	543	64
01:53:48	1972	233	48	255	53	70	4.6	4.5	0.0	0.32	0.19	17	26	71	29	428	445	65
01:54:04	746	62	5	68	5	7	3.1	2.4	0.0	0.10	0.03	19	26	72	29	331	343	67